



LV JUICE



Raychem
from TE Connectivity



RAYGEL PLUS JOINT KITS

Raychem RayGel Plus Joint Kits offer quick, easy reliable sealed joints for low voltage applications. Enclosures offer a state-of-the-art sealed joint for underground, direct-buried and overhead applications.

FEATURES

- Housing is made of Halogen free UV resistant Polypropylene
- RayGel PowerGel Sealant
- Some kits include connector blocks or connectors

WIDE APPLICATION AREA

- Street, garden and pool lighting
- Connection of outdoor equipment
- Frost protection systems

- Cable trays and cable ducts
- With Raychem GelBox 25 joints up to 5x25mm or 4x35mm²
- For single-core cables from 10-50mm² & multi-core cables from 2x1.5 up to 5x16mm²

SOPHISTICATED ENCLOSURE DESIGN

- Optimised joint design with integrated strain relief and more space for the connection
- Flexible wave-like gel barriers (no tools required)

UNIVERSAL CONNECTOR BLOCK

- Full range of branching capabilities without cutting of main cables

- Supplementary tool for insertion of sliding nuts
- Unique latchable connector block for even more effective and easy installation

POWERGEL SEALANT FILLED

- Covers and seals every connection quickly and easily, saving time and effort
- Rated to 90°C continuous temperature
- Environmentally friendly

FREE PACK OF JET PLANES
WHILE STOCKS LAST



When you spend over \$300 (excl GST) on one invoice this month



This Month

TRANSNET FLUSH BOXES
PAGE 3

EVERYTHING YOU NEED FOR EARTHING
PAGE 4

RAYTEC HAZARDOUS AREA LUMINAIRES
PAGE 8





ACOUSTIC FIRE PAD

These non-setting intumescent putty sheets are designed to be a cost-effective and efficient method of firestopping electrical sockets in dry wall fire-rated partitions.

FEATURES

- Up to 2 hours fire protection installed internally, up to 1 hour externally
- Simple to install
- Suitable for most drywall applications
- Acoustic rated with weighted sound reduction index of 65 in accordance with EN/ISO 7171-1
- Tested to AS1530.4-2005 & AS4072.1-2005
- Tested back to back
- Sound Transmission Class: 60

APPLICATIONS

Acoustic Fire Pads can be fitted around the outside of a metal TransNet flush box to achieve both an Acoustic and Fire rating.

These pads are rot proof, do not sustain vermin, and will not encourage the growth

of fungi, mould, or bacteria. They are not a health, spill, or environmental hazard.

ACOUSTIC ASSESSMENT IN DRYLINING PARTITION

Based on airborne sound insulation measurement results contained in BRE Report 224463 from laboratory tests done on three electrical sockets lined with 2mm Firetherm Putty Pads.

R_w dB	R_w+C_{tr} dB
65	57

Three electrical sockets lined with 2mm Firetherm Putty Pads were installed on both sides of the partition.

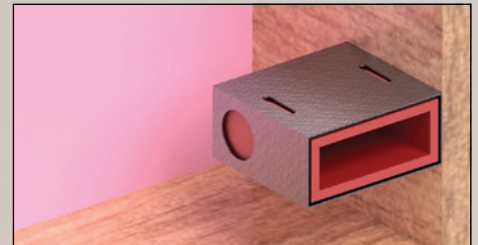
R_w Weighted sound reduction index: A single number quantity that characterises the airborne sound insulation of a material or building element in the laboratory.

$R_w + C_{tr}$ Single number quantity that characterises the A-weighted level difference between source and receive rooms when the sound source has the spectral content of road traffic noise.



FTPPADLGE

System Drawing V37.2
- available on request



EXPANDING MASTIC HP

Firetherm Intumastic HP is a low smoke intumescent pressure exerting mastic used to seal fire rated openings where passage of flame is a risk. Manufactured under controlled factory conditions and to precise specifications.

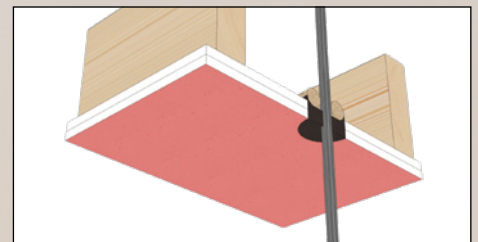
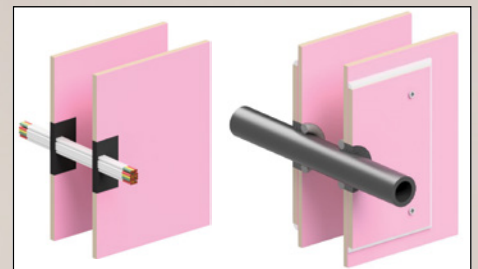
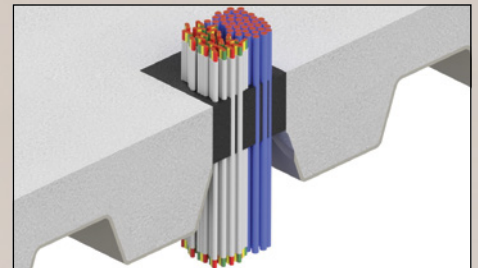
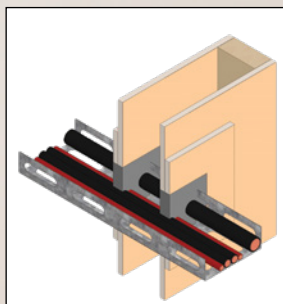
FEATURES

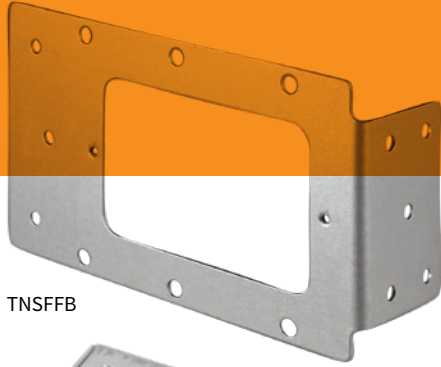
- Size: 310ml tube
- Colour: Grey
- Tack free time: 15-60 minutes depending upon temperature/humidity
- VOC: 4gm/litre
- Viscosity: 5,000-7,000 poise at 20°C
- Specific Gravity: 1.31 at 20°C

APPLICATIONS

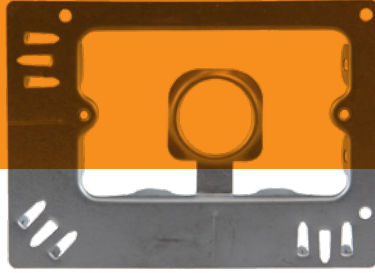
Intumastic HP may be used to seal openings in fire compartment walls and floors around services such as suitably supported ducts, pipe work and electrical cabling against the passage of fire and can provide up to two hours integrity in block-work and plaster board wall constructions.

FTMASTIC

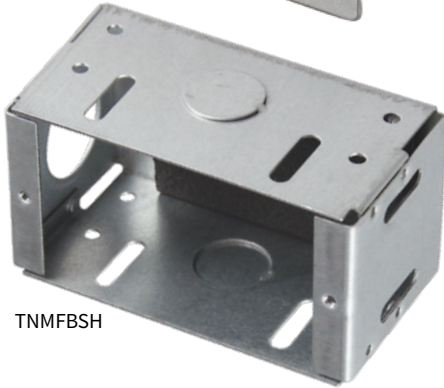




TNSFFB



TNMFBOPEN



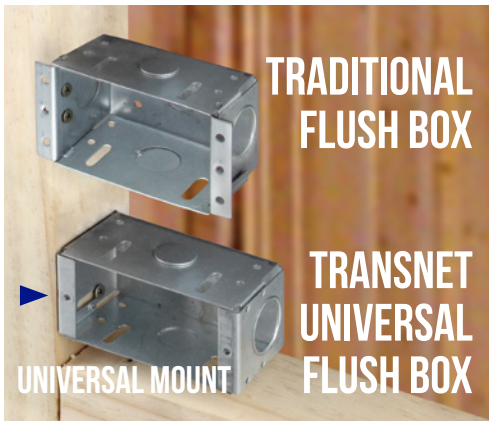
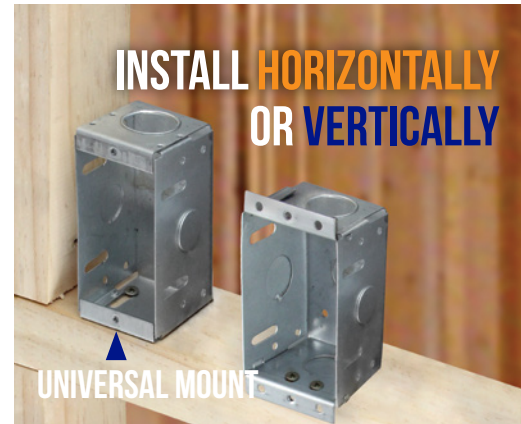
TNMFBSH

FLUSH BOXES

Our flush boxes have been developed and refined with the help and input of people in the industry to ensure user friendly products. In addition to these steel frame and open (Gib mounting plate) boxes, double & single boxes are also available.

UNIVERSAL FLUSH BOX FEATURES

- Completely redesigned to make it truly “universal” in its mounting options
- Speed up fitout time as switchplate screws won't bind into the timber behind it
- Can be mounted vertically or horizontally anywhere on the framework of a wall



Cat No.	Description	Pack Size
TNSFFB	STEEL FRAME FLUSH BOX	20
TNMFBOPEN	GIB MOUNT FLUSH BOX	20
TNMFBSH	FLUSH BOX METAL SINGLE UNIVERSAL MOUNTING	1

INTUMESCENT FIRE PAD

In the case of heat or fire, the fire pad develops a high volume expansion (20.1) and a high expansion pressure which causes the complete closure of an opening within a short time in order to prevent the transition of smoke and fire.

FEATURES

- Fire resistance class EL-90

according to EN 1366/3

- Tested to AS1530.4-2005
- AS4072.1-2005

APPLICATIONS

Electrical flush boxes such as

- Light switches
- Socket outlets

Tested with single and double layer GIB walls.





TRANSNET BRASS EARTH BONDING STRAP

Made from H68 brass, TNESTRAP12 is sold by the metre in lengths up to 50m.

Cat No.	Hole Diameter (mm)	Strap Width (mm)	Distance Between Holes (mm)	Spool Length (m)
TNESTRAP12	6	12	15	50

*Fastenings not included



TRANSNET BRASS DOMESTIC EARTH CLIP

The ECPB16 is a high quality brass earth clip designed for 13, 15, & 16mm Galvanised Rod.

FEATURES

- Made of high quality brass
- Bolted connection for fast easy installation
- No special tools required
- Designed to fit 13mm, 15mm, & 16mm OD Galvanised Earth Rods
- Designed for single conductor parallel orientation
- Easy to remove if required – no damage to substrates

Cat No.	Description
ECPB16	BRASS DOMESTIC EARTH CLIP 6–10MM ² CABLE SUITABLE FOR 13MM, 15MM, & 16MM GALVANISED ROD



TRANSNET EARTH IDENTIFICATION TAG

TransNet's plastic earth identification tag attaches to the main earth for easy recognition. Simple to install, the earth tag has also features UV stabilisation to give it a longer life.

FEATURES

- Easy to install
- UV stabilised plastic
- Identify earthing connectors
- Made in NZ
- Sold in packs of 100

Cat No.	Description
TNEARTH TAG	GREEN PLASTIC EARTH LABEL



CADWELD PLUS ONE SHOT produces a permanent exothermic connection to a ground rod that won't loosen, corrode or increase in resistance for the life of the installation. The convenient single-use package makes the connection without a mold or starting material, and the refractory ceramic body is more durable than conventional ceramic and resists breaking. Thanks to the electronic CADWELD® PLUS Control Unit, welds can now be completed up to 6 ft. (1.8 m) away, increasing weld flexibility in hard-to-reach areas. Ideal for electrical transmission and distribution, telecommunications and cable television applications.

FEATURES

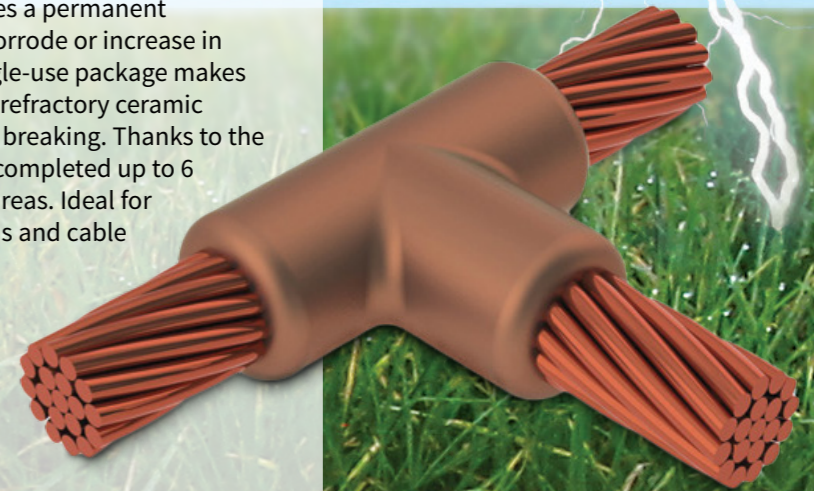
- Easy to use electronic ignition
- No starting material
- Durable disposable ceramic body eliminates the graphite mold and frame
- Permanent connection won't loosen or corrode
- Fits both plain and threaded copper-bonded and full-size steel and stainless steel ground rods
- Electronic Control Unit #PLUSCU (sold separately) ensures no starting material is required and easy ignition
- Six foot control unit lead gives increased flexibility in hard to reach areas
- NEC Compliant and UL Listed

EXOTHERMICALLY WELDED CONNECTIONS

The Cadweld molecular bonding process is superior in performance to any known mechanical or compression-type surface-to-surface contact connector. By virtue of the molecular bond, Cadweld connections provide current-carrying (fusing) capacity equal to that of the conductor and will not deteriorate with age.

Cadweld connections are UL Listed and satisfy IEEE® Standard (Standard for Permanent Connections Used in Substation Grounding).

Cat No.	Cable Size	Rod Size	Connection Style
GT1141LPLUS	16MM ²	13MM	T
GT1141QPLUS	25MM ²		
GT1141VPLUS	35MM ²		
GT1142CPLUS	50MM ²		
GT1142GPLUS	70MM ²	15MM	
GT1161LPLUS	16MM ²		
GT1161QPLUS	25MM ²		
GT1161VPLUS	35MM ²		
GT1162CPLUS	50MM ²	15MM	
GT1162GPLUS	70MM ²		





#102 TERMINAL CRIMPER

UTILUX



A must have tool for every tradesman, this ratchet type tool for pre-insulated and supergrip terminals ensures a complete crimp every time.

FEATURES

- Range: 0.5mm² – 5.5mm² (Red, Blue & Yellow pre-insulated)
- Crimp Type: Oval on conductor diamond on insulation
- Length: 230mm
- Weight: 550g



Product #102/1
\$77.00
+ GST

#103 TERMINAL CRIMPER

UTILUX



This ergonomically designed ratchet type tool is suitable for un-insulated Copper lugs and links.

FEATURES

- Range: 0.5mm² – 16mm²
- Crimp Type: Indent
- Length: 230mm
- Weight: 550g



Product #103/1
\$83.00
+ GST

PARROT BEAK CABLE CUTTER

UTILUX



This parrot beak style cable cutter is suitable for Copper & Aluminium conductors.

Replacement blades available. Not for use with steel core conductors.

FEATURES

- Range: Up to 240mm²
- Length: 610mm
- Weight: 1.8kg



Product #140/1
\$205.00
+ GST

COPPER LUG CRIMPER

UTILUX



This hand operated mechanical lever tool is suitable for Copper lugs and links (CG and CK series). It includes a built in, selectable crimp die set for a range of lug and link sizes.

FEATURES

- Range: 6mm² – 50mm²
- Crimp Type: Hexagonal
- Length: 410mm
- Weight: 1.4kg



Product #21/1
\$175.00
+ GST



MARFD650 | DIGITAL FUSE FINDER KIT

This digital fuse finder identifies poorly labelled fuses & breakers without the need to power down each circuit. It can also be used on light fittings or other points in a circuit in addition to 13A sockets. The receiver has both fast manual mode & auto threshold mode set by a single sweep over the board, will work with multiple transmitters. & can also be used as a non-contact voltage indicator.

KEY FEATURES

- Receiver = CAT IV/600V, Transmitter = CAT III/300V
- Temp Range: -10°C to 40°C at max 60% RH
- Earth Leakage: Nil
- Mains Supply: 230V, 30 - 70Hz
- Power Consumption: 1W approx.
- Overtoltage: CAT III 300V
- Protection Class: IP20
- Dimensions 65 x 65 x 46mm, Weight 60g

Kit includes twin lead set with crocodile clips, IEC mains lead & soft carry case



TNVSCANM | PIPE & CABLE LOCATOR WITH METAL DETECTOR

FEATURES

- Compass (line direction indicator)
- Self-test and calibration verification
- Data logging & data management software
- Configuration utility - personalise your vScan
- Metal detection
- Removable loudspeaker - output limited to HSE safety levels
- Peak level indicator
- Compass (line direction indicator)
- High contrast display with backlight
- Push buttons on/off and menu activation
- Vibrate alert
- Internal loudspeaker
- Rotary gain/sensitivity control
- Paddle - navigation/select
- Rugged ABS housing with protective bumpers
- Battery housing for alkaline or Lithium ion battery packs
- USB socket - programming/data transfer
- Output status lights
- Speaker volume control
- Switch - pulse/continuous output
- Output level select

MODES

- Power mode
- Radio mode
- Active modes 33kHz & 131kHz
- Sonde mode (33kHz, 640Hz, 512Hz)
- Metal locate mode



TN180 | CABLE TRACER/TONE GENERATOR

The TN180 unit is specifically designed for dead circuit tracing and comes complete with an Amplifier probe and a Tone generator. The Amplifier probe is designed to identify and trace wires or cables within a group, without damaging the insulation.

FEATURES

- Adjustable volume to suit work site
- RJ11 and RJ45 connectors included
- Interchangeable with any tone generator



BRING HAZARDOUS AREAS TO LIGHT

Spartan Linear – Zone 1 & 2



TransNet New Zealand Ltd

Auckland

78 Cryers Road
East Tamaki
Auckland
NEW ZEALAND
Ph 0800 442 182
Fax 0800 442 183
PO Box 39 383
Howick, Auckland

Wellington

10 Petone Ave
Petone
Wellington
NEW ZEALAND
Ph 04 576 2530
Fax 04 576 0040
PO Box 39 383
Howick, Auckland

NEW ZEALAND

sales@transnet.co.nz

TransNet Tonga

Ma'ufanga

Small Industries
Ma'ufanga
TONGA
Ph +67 627 939
Fax +67 627 976
PO Box 2932
Nuku'alofa

TONGA

transnet@kalianet.to



These SPARTAN 4' Linear luminaires are designed specifically for use in new hazardous area installations or to retrofit existing fluorescent installations which require high performance, reliable, White-Light illumination. Housed in Marine Grade aluminium and using Raytec's field-proven, long-life LED technology, SPARTAN Linear is ATEX and IEC Ex approved for all Zone 1/21 & 2/22 applications.

Features	Benefits
Retrofitable	Easy Installation, matching the dimensions of traditional 2x36W fluorescent fittings, to provide an easy direct replacement Equivalent output to a 2x36W fluorescent
Intelligent Emergency	Self-testing emergency battery proactively monitors & maintains the overall health of the luminaire Easy inspection thanks to a tri-colour LED indicator
Modular Design	Both the LED & PSU modules are easily accessible for maintenance and inspection
Ultra-Powerful	High lumen output – 5,000 lm Zone 1/21, 6,800 lm Zone 2/22 Latest high power LED technology
Ultra-Reliable	Industry leading 5 year warranty Designed & manufactured in the UK to the highest standards including both ISO9001 & ISO14001 Advanced electronics and LEDs protected by vibration resistant & waterproof potting compound Intelligent emergency with automatic self-testing
Ultra-Efficient	Thermal management technology delivers class leading energy efficiency Significant running & maintenance savings compared to traditional lighting technologies SMART access wiring system for safe & efficient installation, set-up & ongoing inspection

*Also available as a Single Entry

SPX-WL168-LL
Zone 1/21 Single Entry
\$1115.00 + GST

SPZ-WL168-LL
Zone 2/22 Single Entry
\$939.00 + GST



SPX-WL168
Zone 1/21*
\$1469.00
+ GST



SPX-WL168-EM25
Zone 1/21 Emergency
\$2469.00
+ GST



SPZ-WL168
Zone 2/22*
\$1115.00
+ GST



rayTEC

TransNet NZ Ltd has made every reasonable effort to ensure the accuracy of this information and it is to the best of our knowledge correct and reliable. Under no circumstances does this constitute an assurance of any particular quality or performance and users should independently evaluate the suitability of products for their desired application. All information in this publication including pricing, drawings, illustrations, images and graphic designs are reflections of our current understanding. TransNet NZ Ltd reserves the right to make any adjustment to this information at any time. Our liability for the products outlined in this publication is set forth in our standard terms and conditions of trade. In case of any potential ambiguities or questions, please contact us for clarification.



NEW ZEALAND OWNED